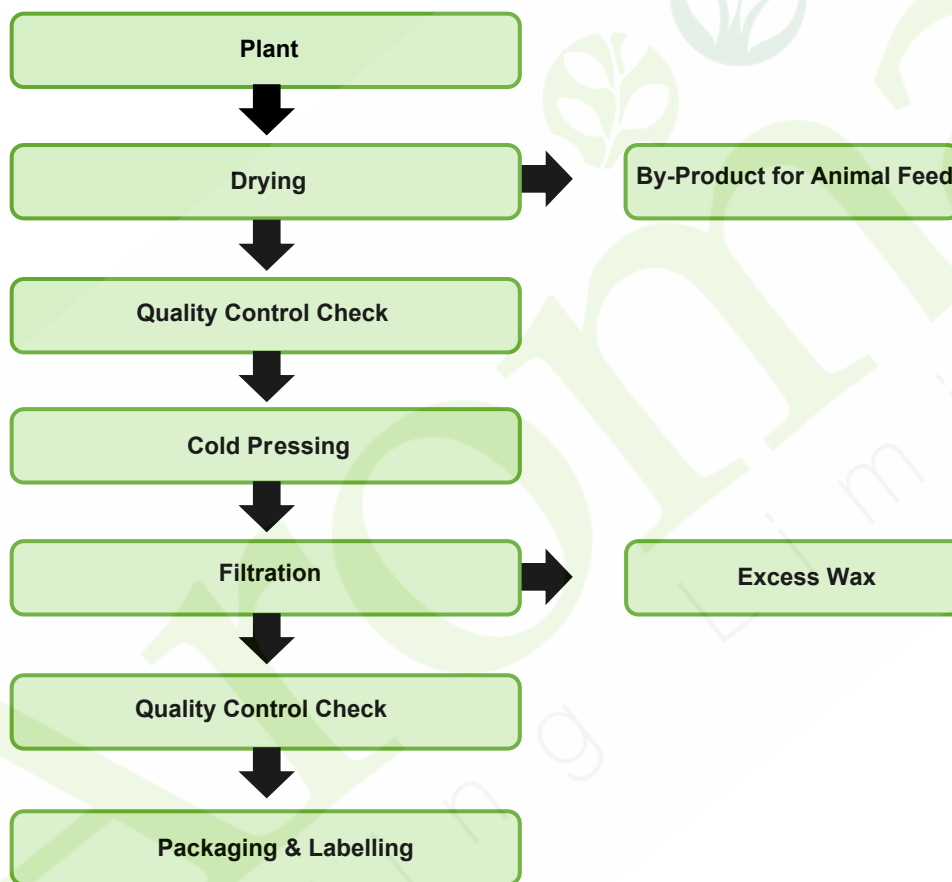


## PROCESSING FLOW CHART

|                |                              |             |                   |
|----------------|------------------------------|-------------|-------------------|
| <b>PRODUCT</b> | <b>ORGANIC WHEATGERM OIL</b> |             |                   |
| <b>SKU</b>     | <b>23308</b>                 | <b>DATE</b> | <b>10/02/2024</b> |



### DISCLAIMER

Aroma Trading Ltd shall not be held liable for any damage resulting from handling, application or processing of our ingredients, since the conditions of use are out of our control. Information provided by Aroma Trading Ltd, including the composition or use of our ingredients, are provided in good faith, based on current technical and scientific knowledge, but without any warranty as to their accuracy or completeness.

Any user of our ingredients shall themselves determine the suitability of our ingredients for their own intended use and as may be the case, obtain the required regulatory approvals for the commercialization of their finished products.

Any person using our ingredients in the formulation of their own finished products are solely responsible for ensuring that the use of our ingredients, the finished products, the packaging, labelling and any claims they make with respect to their finished products and the ingredients they contain, comply with their country/state/regional applicable laws and regulations.

Bay House Ingredients® & Soapmakers Store are Divisions of Aroma Trading Ltd  
Registered No. 02698381, V.A.T. Registration No. 600 516 981, EORI GB60051698100

Electronically generated, this document is not signed.  
Quality Control Department